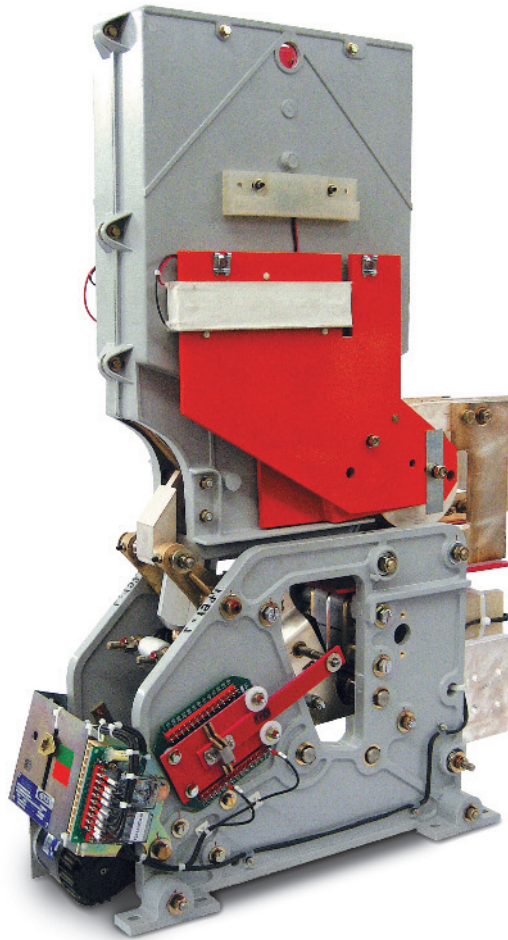


HSCBs

DC High Speed Circuit Breakers



IR6040IEEEE

Applications

DC Substations

Industry

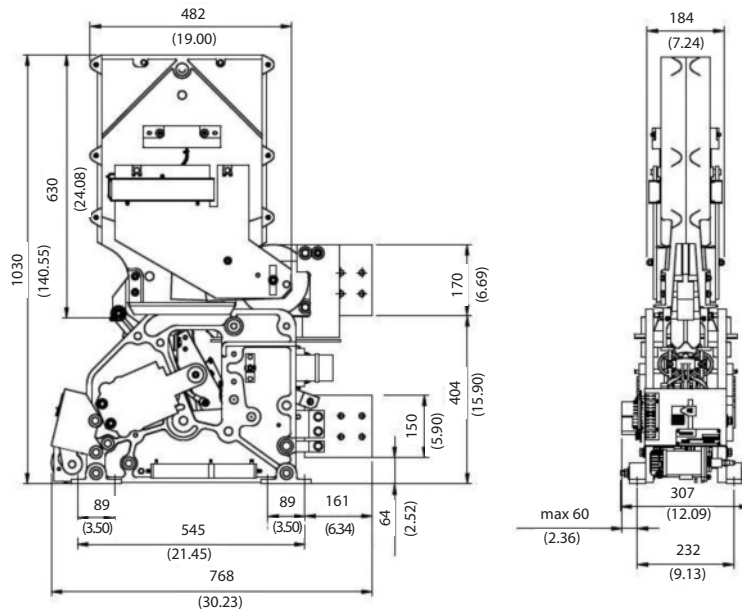
The IR6040 with Permanent Magnet and Electromagnetic latch Series is fixed or withdrawable, single pole magnetic blow out, trip free, air circuit breakers. The closing mechanism is an independent motor operated type. The breaker is held closed by Permanent Magnet and is equipped with a direct acting over-current trip device which may be either unidirectional or bidirectional. It is equipped with an opening manual device. The breaker conforms to IEEE 37-14, IEEE 37-16 Standards as a FEEDER BREAKER.



Microelettrica Scientifica

HSCBs

DC High Speed Circuit Breakers: IR6040IEEE



Overall Dimensions: mm (inches)

Technical Data

| | | IR6040 | IR6040 |
|--|----------------|-------------------------|------------------------|
| Rated voltage [V] | U_n | 800 | 1200 |
| Rated current [A] | I_n | Up to 4000 | Up to 4000 |
| "Short circuit breaking capacity (IEEE 37-14)" | U_c | 800 [V] | 1200 [V] |
| | \hat{I}_{cc} | 200 [kA] - Peak | 135 [kA] - Peak |
| | I_{cc} | 120 [kA] - Steady State | 80 [kA] - Steady State |
| Tripping direction independent | | Uni and Bidirectional | Uni and Bidirectional |
| Trip setting of overcurrent release | I | From 500 to 20000 [A] | From 500 to 20000 [A] |
| Auxiliary circuit | | | |
| Rated voltage [V_{DC}] | U_n | 24 ÷ 220 | 24 ÷ 220 |
| Type of closing device | | With servomotor | With servomotor |
| Type of holding device [PM= Permanent Magnet] | M | M | M |
| Note | | | |
| Available contacts | | 6 NC + 6 NO | 6 NC + 6 NO |
| Weight – Up to 4kA | kg | 160 | 160 |



KNORR-BREMSE



Microelettrica Scientifica

Microelettrica Scientifica S.p.A. S.S. 11 Padana Superiore, 133 20090 Vimodrone (MI)
Tel.: +39 02 265181 Fax: +39 02 2651824 info@microelettrica.com
www.microelettrica.com