

DC Switchgears



Diadlad Switchgears

DC Switchgears Type DIACLAD

For substations (750V DC - 1.5KV DC - 3KV DC)

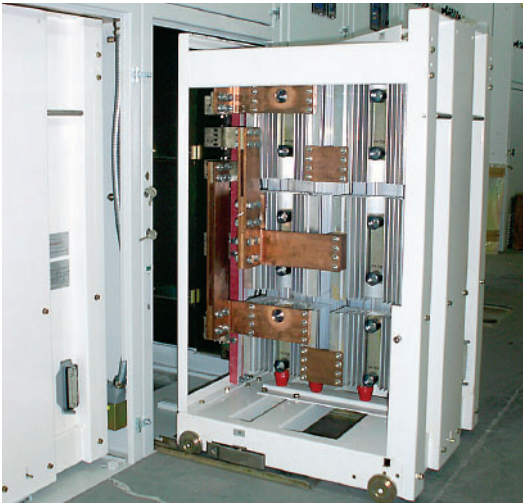
Applications

DC Substation

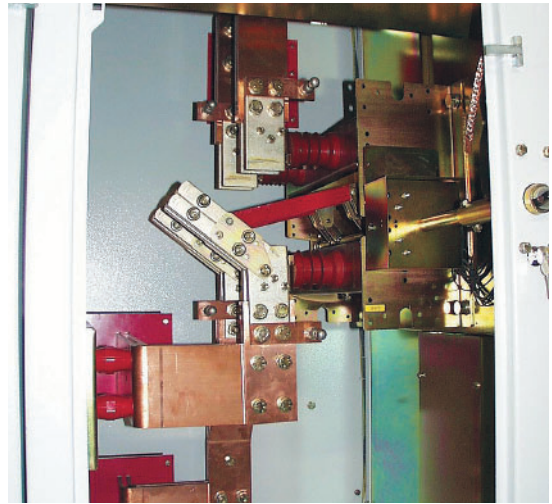
The DC Switchgears type "DIACLAD" are designed and manufactured for 750, 1500 and 3000V according to EN 50123. The Diadlad Switchgears are capable to withstand internal arc at 50 kA – 300 ms. The cubicle, metalclad type, are pre-fabricated with IP 30 degree of protection, suitable for indoor installation. The minimum thickness of the frame is 3 mm. The doors, panels and diaphragms are made with 2 mm minimum thickness plates. When the doors are open an IP20 degree of protection is guaranteed. Any device location of each cubicle is aimed to ease maintenance and replacement operations. The quality and technology of Diadlad components enable to limit the dimensions and ease the maintenance: live components are completely separate allowing access to high and low voltage devices even when adjacent cell's are in operation.

EMC Traction

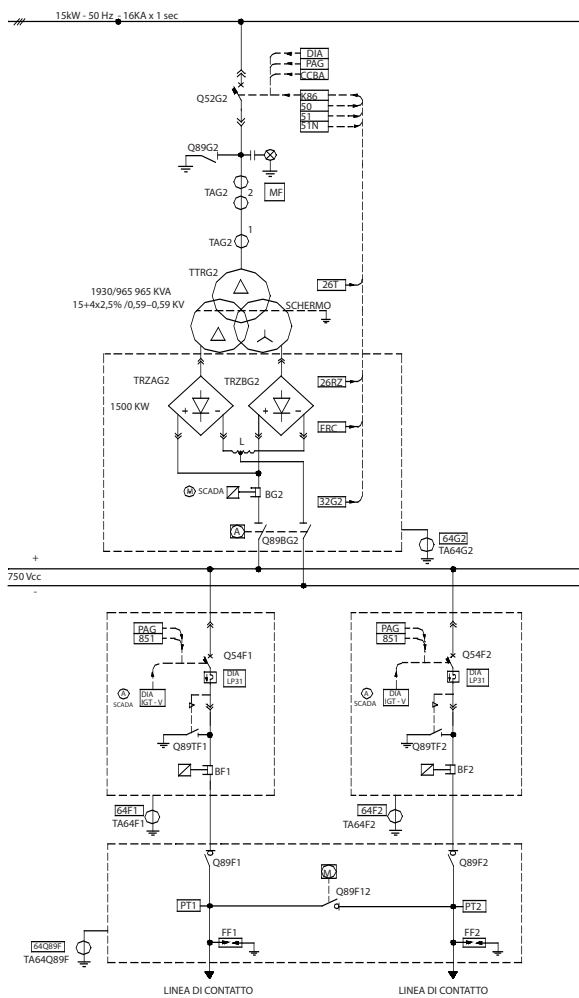
DC Switchgears DC Switchgear Type DIACLAD



Rectifier Cubicle



Disconnector Cubicle



Feeder Cubicle



Protection Relay