

# Resistors

On-board

## Continuous Duty Control Resistors

- Damping
- Filter

### Applications

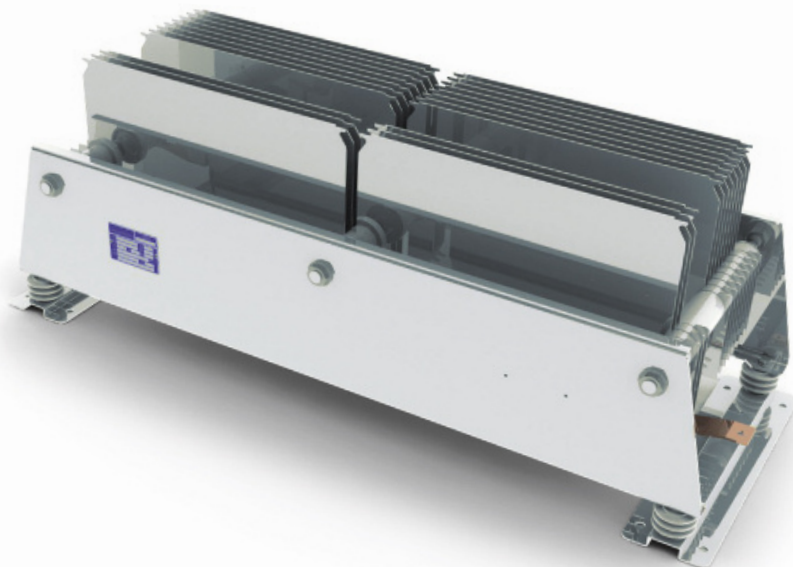
Rail Vehicles

Auxiliary resistors are designed and optimized in order to adapt to the available space on the vehicle.

Damping Resistors are used to limit current and voltage peaks in a power circuit.

Filter Resistors are used to remove harmonic voltage distortion caused by the ever-increasing use of power electronics and other solid-state devices.

Harmonics can be reduced to acceptable levels by passive filter circuits, where the undesired harmonic currents are dissipated as heat.

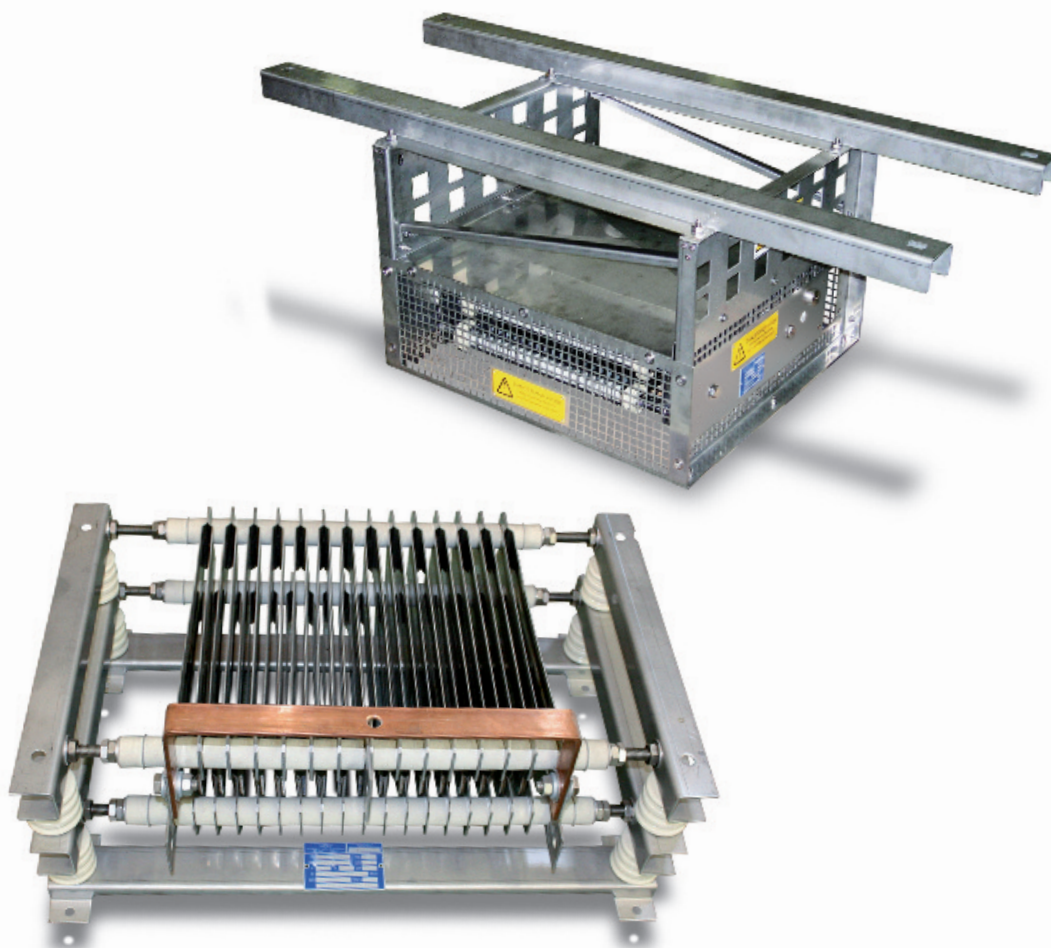


*Microelettrica Scientifica*

# Resistors

## On-board: Continuous Duty Control Resistors

Small resistors size and high ohmic value are available.  
Resistors are designed by our engineers with a 3D model in order to find the best solution for our Customers and to withstand shocks and vibrations that normally occur in operation.  
Design and production strictly follows our ISO 9001:2008 and IRIS Rev. 2 quality standards as well as the most severe international specifications.



**KNORR-BREMSE**



*Microelettrica Scientifica*

Microelettrica Scientifica S.p.A. Resistor Division Via del Lavoro, 1-3, 20084 Lacchiarella (Milano) - Italy  
Tel.: +39 02 92270700 Fax: +39 02 90076685 - sales.resistors@microelettrica.com  
www.microelettrica.com